



Changing How People Think
About Flow in Reef Aquariums

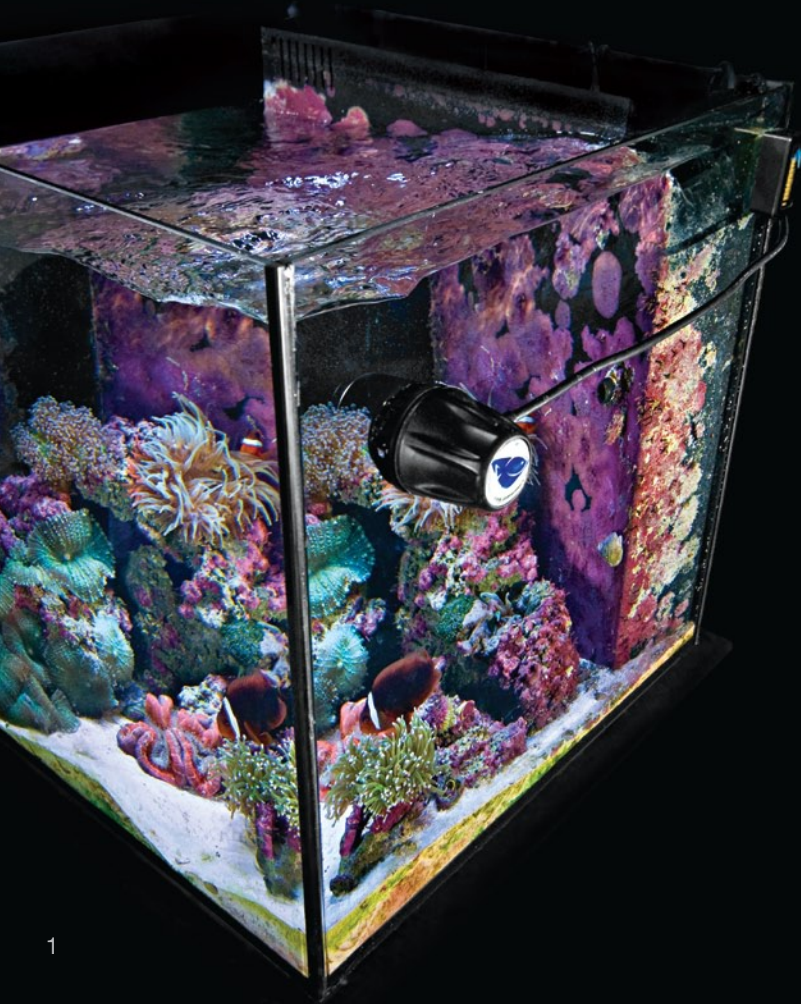
Revolutionary
Pump Technology
for Reef Aquariums



1349 Lynn Ave., Bethlehem, PA 18015
610 954 8480 800 785 0338 (toll free) 888 500 2907 (fax)

EcoTech Marine

Revolutionary Pump
Technology for
Reef Aquariums



Revolutionary Technology

EcoTech Marine revolutionized the reef aquarium industry with its award-winning line of VorTech products and accessories. We offer low-profile, broad-flow pumps and accessories for aquariums ranging from 2.5 to 1,000+ gallons (9.5 to 3,800+ L). Every product from EcoTech Marine is backed with our industry-leading customer service.

New Standards for Flow

EcoTech Marine has set new standards for water movement in reef aquariums. Our technologically superior pumps produce unmatched broad yet gentle flow, while placing the motor outside the tank—preserving the beauty of your aquarium and enhancing the health of your aquarium ecosystem.

Continually Raising the Bar

Stop by our R&D lab on any given day and you will see next-generation technology being tested and put through its paces. Only the best-performing, highest-quality, industry-changing products will make it to the marketplace—and your aquarium.

That's the EcoTech advantage.

VorTech™

Elegantly Discreet.
Highly Controllable.
Incredibly Effective.

The award-winning VorTech line of aquarium pumps from EcoTech features the MP10, MP40 and MP60—the smallest propeller pumps on the market when you consider how little space they occupy inside the aquarium.

Watch Your Aquarium, Not Your Pump

The VorTech is beautiful in its simplicity. The motor is *outside of the aquarium*—meaning the VorTech may be positioned where it is least visible.

Magnetic Torque Transfer

A magnetic couple transmits motion through your aquarium glass and, at the same time, clamps the assembly against your tank. No more drilling—and you can easily reposition the pump without having to move around complicated, awkward brackets.

Wireless Connectivity

The MP10w ES, MP40w ES and MP60w ES can communicate wirelessly with other VorTech pumps for even greater control and flexibility.

The VorTech Benefit

Innovative: Patented design places the motor outside the aquarium—delivering the smallest in-tank footprint of any comparable pump.

Broadest Flow: Powerful yet gentle flow eliminates dead spots in the tank.

Easy Setup: Bracket-free design with magnetic coupling is a snap to install.

Eco-Friendly Low-Heat Design: External motor mount means less heat in the water, which means less energy/money spent on cooling.

Safe: No electrical components ever touch the water.

Customizable Wave Modes: Controllable wave modes can be customized for your unique tank setup.

Versatile Flow Rates: Adjustable flow rates create a more natural circulation for your unique ecosystem.

Healthy Undertow: A natural undertow is created along the sand bed, leading to a healthier ecosystem.

Efficient: Advanced brushless motor design reduces electricity consumption.

Quick Cleanup: Wet-side cleaning is a breeze.

Battery Backup: Optional battery backup gives you peace of mind by keeping the circulation going during power failure.

					MODES						
	TANK SIZE	FLOW GPH (LPH)	WATTAGE	MAX. TANK THICKNESS (mm)	WIRELESS	ECOSMART	CONSTANT	RANDOM	PULSE	NIGHT	MSRP
MP10 ES	2.5-50+ gal. (9.5-190+ L)	200-1,575 (750-6,000)	8-18	3/8" (9.5mm)		✓	✓	✓	✓	✓	\$220
MP10w ES	2.5-50+ gal. (9.5-190+ L)	200-1,575 (750-6,000)	8-18	3/8" (9.5mm)	✓	✓	✓	✓	✓	✓	\$265
MP40w ES	50-500+ gal. (190-1,800+ L)	1,000-3,200 (3,785-12,100)	9-28	3/4" (19mm)	✓	✓	✓	✓	✓	✓	\$445
MP60w ES	120-1,000+ gal. (450-3,800+ L)	3,500-7,500 (13,000-28,000)	10-60	1" (26mm)	✓	✓	✓	✓	✓	✓	\$695

Size Does Matter.

The **MP10 ES** is ideal for single-pump setups and is upgradeable to the MP10w ES. The **MP10w ES** uses the EcoSmart™ Driver to wirelessly communicate with other VorTech pumps for even greater flexibility, control and customization of your tank.

The MP10 looks small—but doesn't act small. The MP10 is ideal for tanks from 2.5 to 50+ gallons (9.5-190+ L) and creates gentle flows of 200 to 1,575 gallons per hour (750-6,000 LPH), creating a more realistic, ocean-like environment.

Both the MP10 ES and the MP10w ES models feature our award-winning broad flow and the smallest in-tank footprint on the market today.

Flow: 200-1,575 GPH (750-6,000 LPH)

Power Consumption: 8-18 watts

Maximum Tank Wall Thickness: 3/8" (9.5 mm)

Appropriate Tank Size Range: 2.5-50+ gal. (9.5-190+ L)

Dimensions: Wet Side—2.5" dia. x 1.5" long (64 x 38 mm),
Dry Side—2.5" dia. x 2" long (64 x 51 mm)

Clearance Needed Behind Aquarium: 2.25" (57 mm)



VorTech™ MP10

Quite simply, the
smartest thing
you can put in
your tank.



The award-winning technology of the **MP40w ES** provides wireless operation on tanks between 50 and 500+ gallons (190-1,800+ L), producing 1,000 to 3,200 gallons per hour (3,785-12,100 LPH) of flow and the smallest in-tank footprint for full-size reef aquariums.

The EcoSmart™ Driver enables wireless coordination and enhanced functionality between multiple VorTech units right out of the box, with no extra equipment to buy—making it the most effective solution on the market for larger aquariums.

Flow: 1,000-3,200 GPH (3,785-12,100 LPH)

Power Consumption: 9-28 watts

Aquarium Tank Wall Thickness Range:

3/16"-3/4" (5-19 mm)

Appropriate Tank Size Range: 50-500+ gal. (190-1,800+ L)

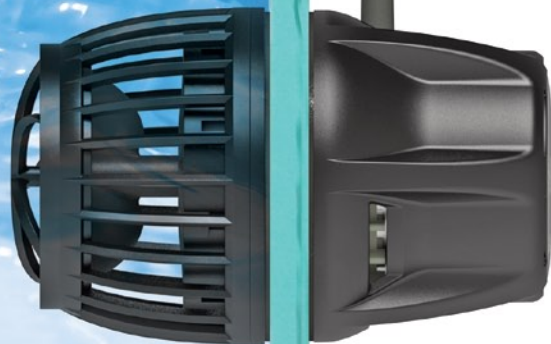
Dimensions: Wet Side—3" dia. x 2.25" long (76 x 57 mm),

Dry Side—3" dia. x 2.25" long (76 x 57 mm)

Clearance Needed Behind Aquarium: 3" (76 mm)

VorTech™ MP40

Inspired by Mother Nature. Engineered by EcoTech Marine.



The **MP60w ES** is engineered for tanks with one-inch glass thickness (26 mm) and holding more than 120 gallons (450 L). It uses the same award-winning technology that has made EcoTech Marine's VorTech line the number one brand of pump among true reef enthusiasts.

With the smallest in-tank footprint for a pump capable of pushing 7,500 gallons per hour (28,000 LPH), the MP60w ES is ideal for larger tanks. The MP60's unmatched flow, market-leading controllability and multi-pump wireless communication out of the box make it the best value for large tanks.

Flow: 3,500-7,500 GPH (13,000-28,000 LPH)

Power Consumption: 10-60 watts

Aquarium Tank Wall Thickness Range: 3/8"-1"
(9.5-26 mm)

Appropriate Tank Size Range: 120-1,000+ gallons
(450-3,800+ L)

Dimensions: Wet Side—4" dia. x 3" long (102 x 76 mm),
Dry Side—4" dia. x 2.8" long (102 x 71 mm)

Clearance Needed Behind Aquarium: 3.3" (84 mm)

VorTech™ MP60

EcoSmart™ Driver

Don't let all this control go to your head.



Included on all new VorTech pumps, the EcoSmart™ Driver sets a new standard for customization, performance and versatility.

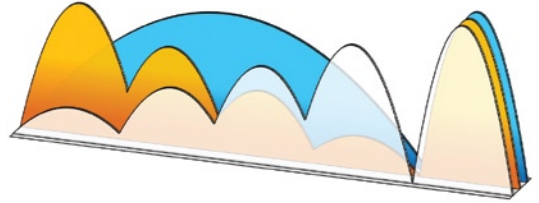
- Industry-leading wireless range allows for the drivers of slave pumps to be located farther from sight or even in separate locations.
- Includes a variety of customer-demanded and extensively researched wave modes, LED display and fine-tuning of speed control with the turn of a knob for unmatched controllability.

Please note: EcoSmart™ Drivers are NOT a stand-alone product. However, previous-generation VorTech pumps can be upgraded to run with the EcoSmart Driver.

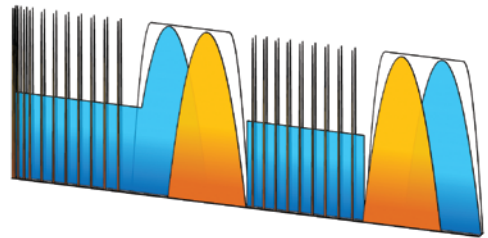
See our website for details.

Operational Modes

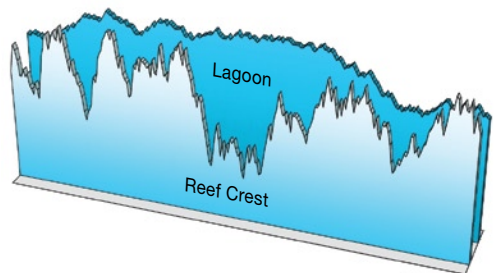
EcoSmart™ Tidal Swell Mode: Creates a harmonic balance in your aquarium, reminiscent of the changing flow conditions found in nature. Flow varies from left to right, right to left, calm and ends with a great surge.



EcoSmart™ Nutrient Transport Mode: A two-phase program to promote maximum health and nutrient export, as well as increased growth for corals. Alternates between a resonant standing wave and a surge effect to stir up and export nutrients.



Random Modes: Reef Crest Random Mode simulates the high-energy conditions of a natural reef crest environment. Lagoonal Random Mode simulates the gentler reef zone found in a natural lagoon.

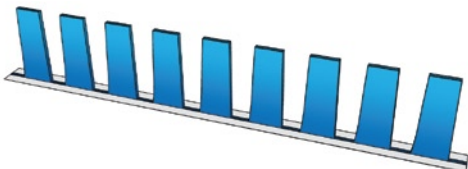


Continued...

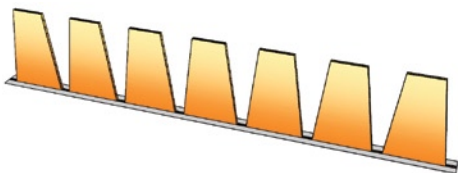
EcoSmart™ Driver

Continued from previous page

Short Pulse Mode: Allows for wave pulse timings between 0.3 and 2 seconds, enabling the creation of fast alternating flow throughout the tank. Use this mode to create a resonant standing wave.



Long Pulse Mode: Allows for wave pulse timings of between 2 seconds and 60 seconds, enabling the creation of slow alternating flow throughout the tank.



Other Modes

Constant Speed Mode: Pump runs continuously at a constant user-defined speed.

Wave Auto Tune: Automatically adjusts wave frequency.

Feed Mode: Slows down pump to allow user to feed aquarium.

Night Mode: Automatically reduces speed during the night.

Battery Backup Mode: Switches to Battery Backup Mode in the event of a power outage (requires Battery Backup).

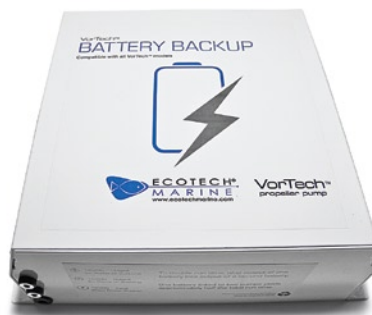
Auto-Dim: Driver LEDs are turned off and display knob dims.

On/Off Switch: Tap to turn pump on and off. Hold to turn on/off all pumps in a master/slave group.

Battery Backup

Prepare for the Unexpected...

Blizzard. Hurricane. A motorist smashed into a utility pole down the road from your house. Stuff happens. The power goes out.



In an aquarium with no flow, fish and corals begin to die in as little as 4 to 10 hours. The VorTech Battery Backup is reef tank insurance in an aluminum housing. By adding the VorTech Battery Backup, your tank is insulated from power interruptions, helping protect your valuable investment—and your tank inhabitants.

BACKUP HOURS		
MP10	MP40	MP60
72 hours	36 hours	20 hours

**Hours are estimated and will vary depending on battery life, pump mode and other factors.*

Additional Product Features

- Power two pumps for up to half the single-pump backup time.
- Connect two Battery Backups together and power one pump for up to twice the single-pump backup time.
- Comes with trickle charger so you're always prepared.
- Complete package comes with all necessary wiring cables.